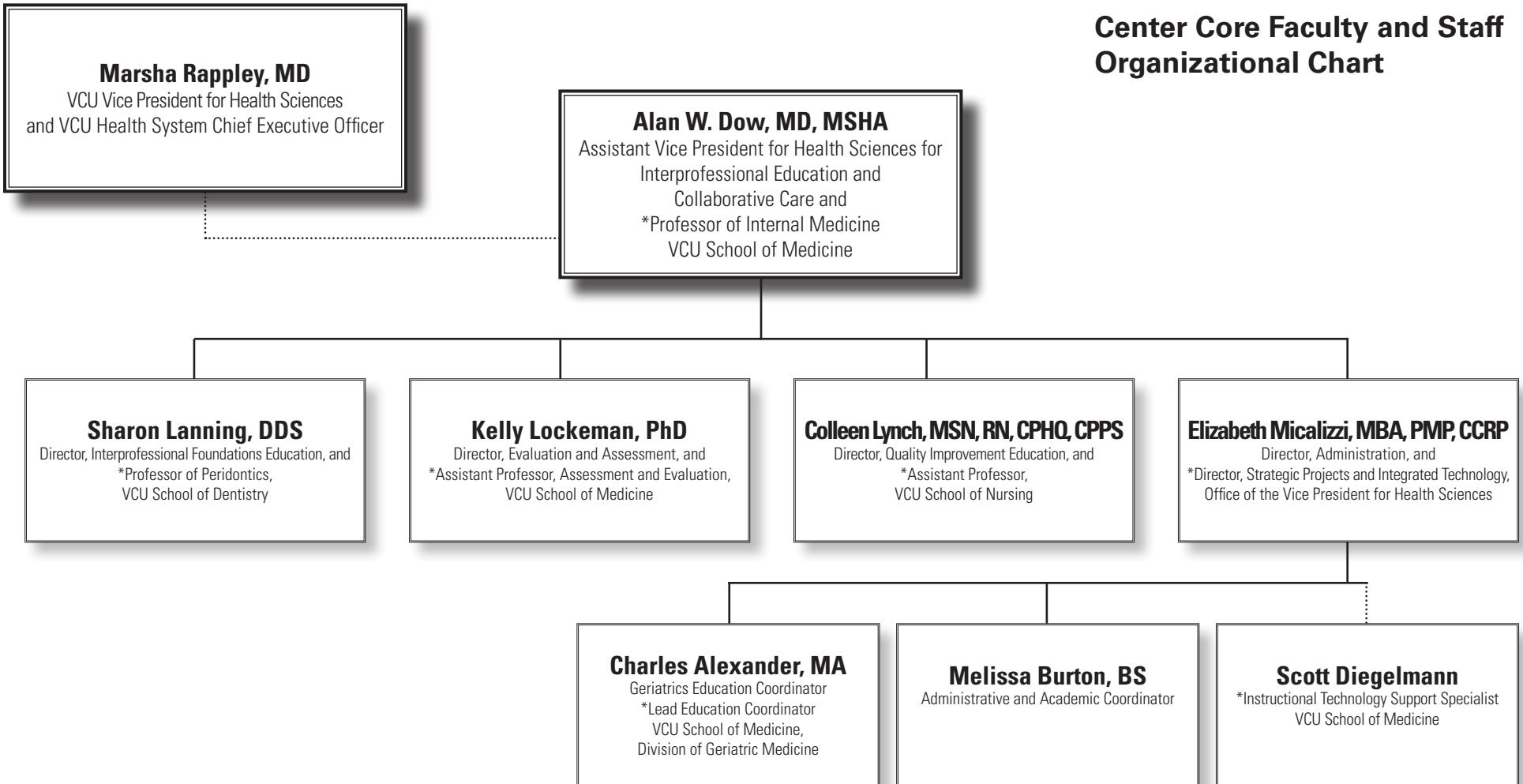




VCU Center for Interprofessional Education and Collaborative Care

Center Core Faculty and Staff Organizational Chart



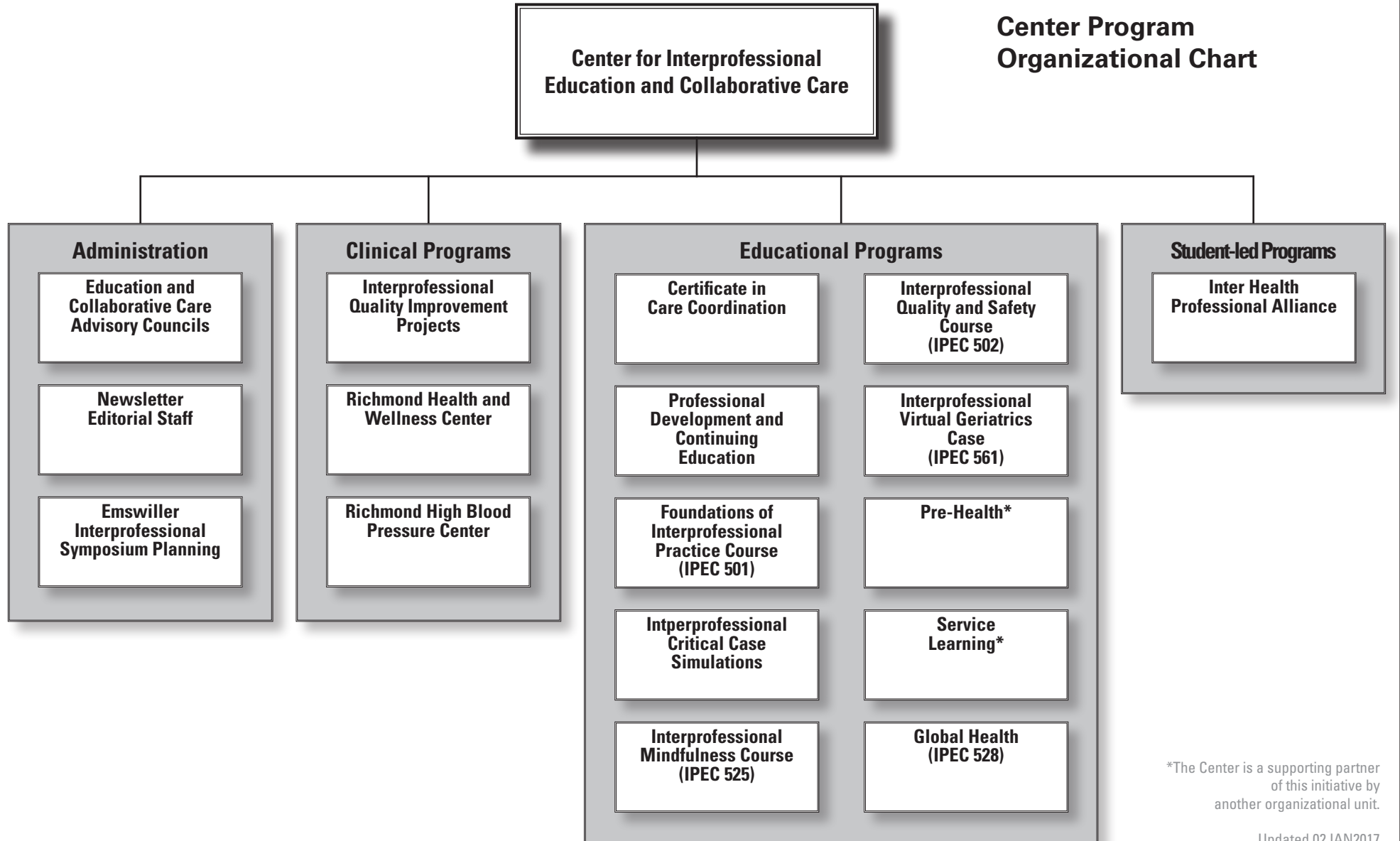
* Holds joint appointment with respective school/unit; Primary faculty appointment also indicated.



VCU Center for Interprofessional Education and Collaborative Care

Center for Interprofessional Education and Collaborative Care

Center Program Organizational Chart



*The Center is a supporting partner of this initiative by another organizational unit.